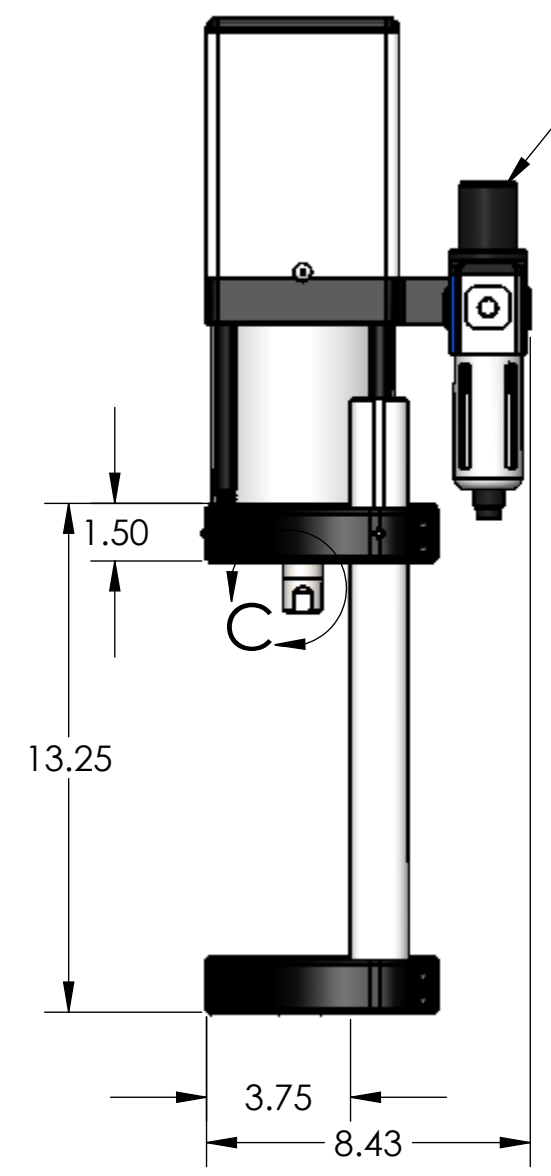
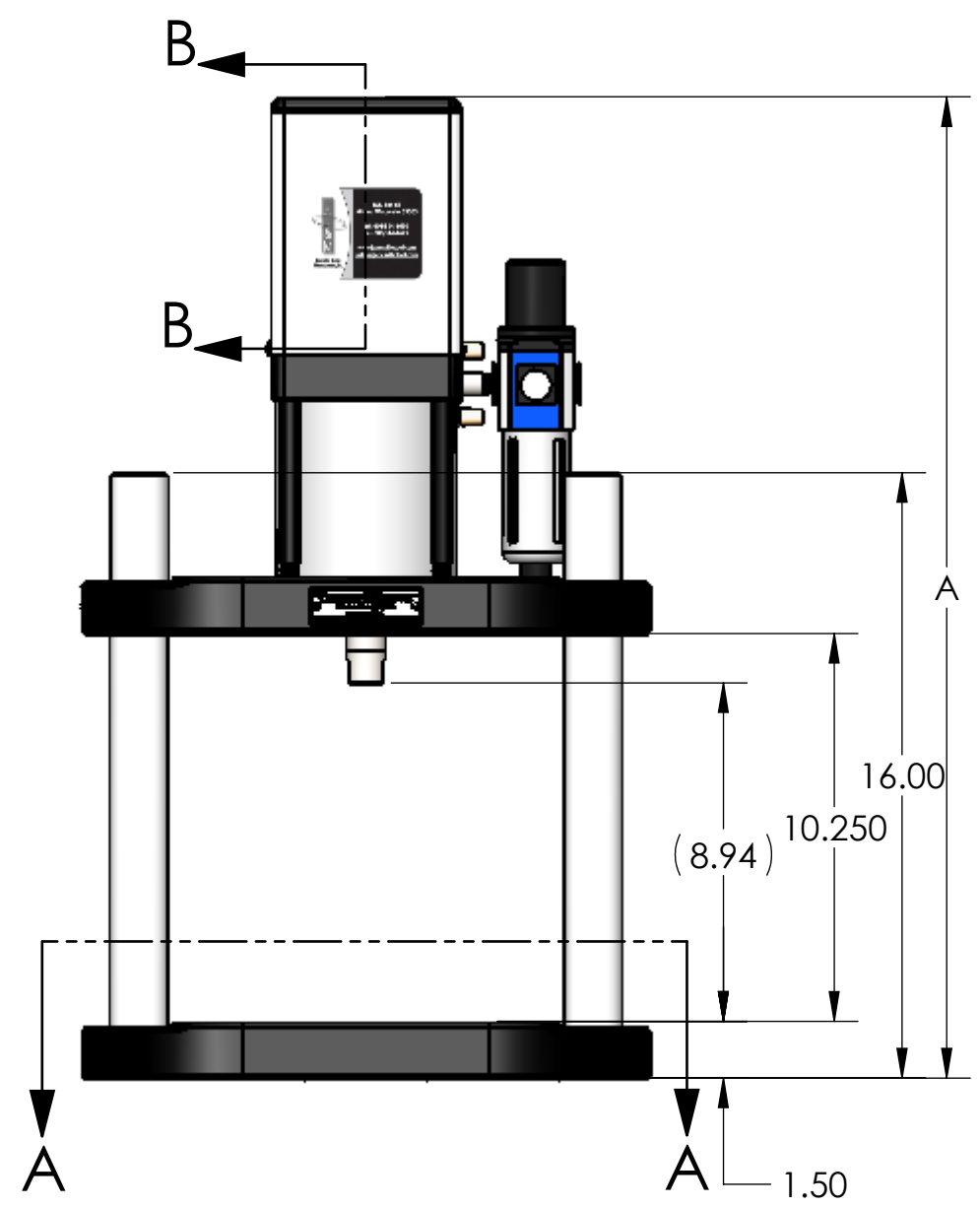
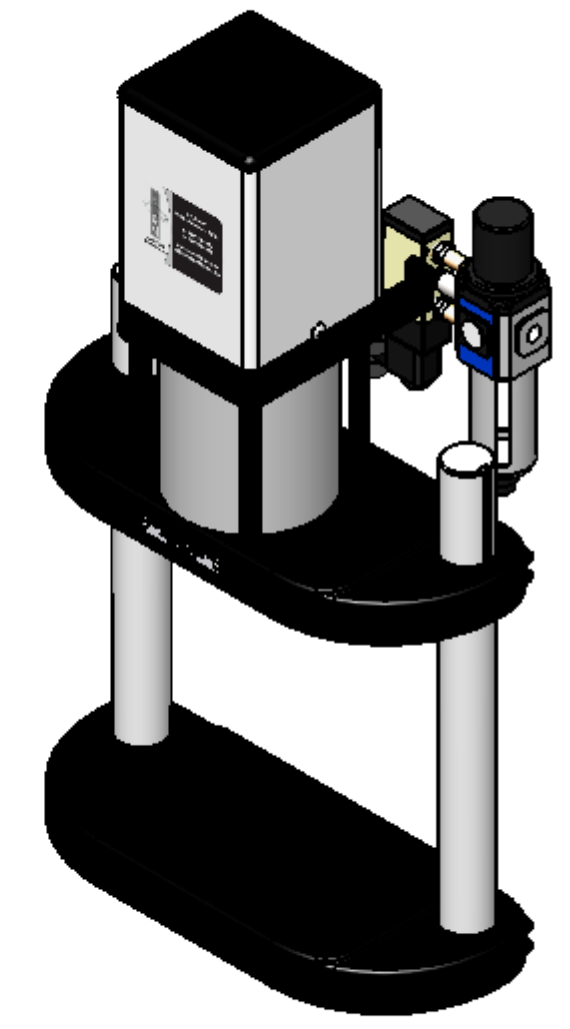


ADJUSTABLE DOWNSTOP/  
ANTI-ROTATE MECHANISM

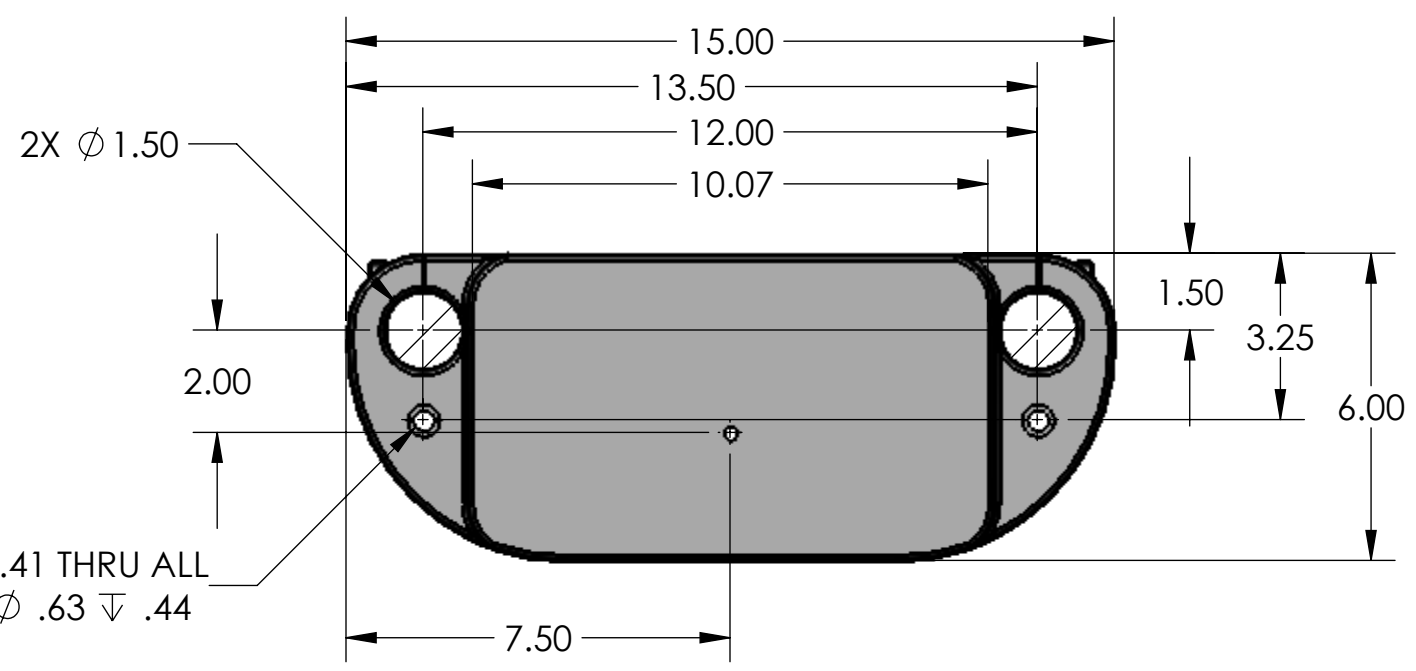
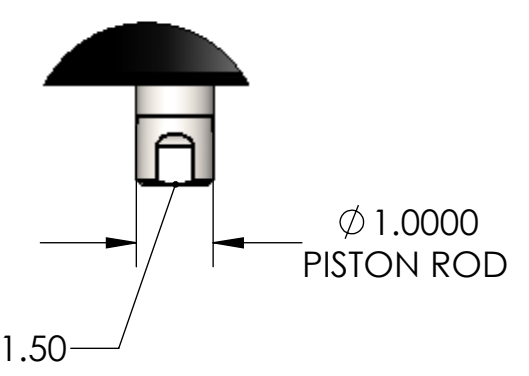
SECTION B-B  
SCALE 1 : 3



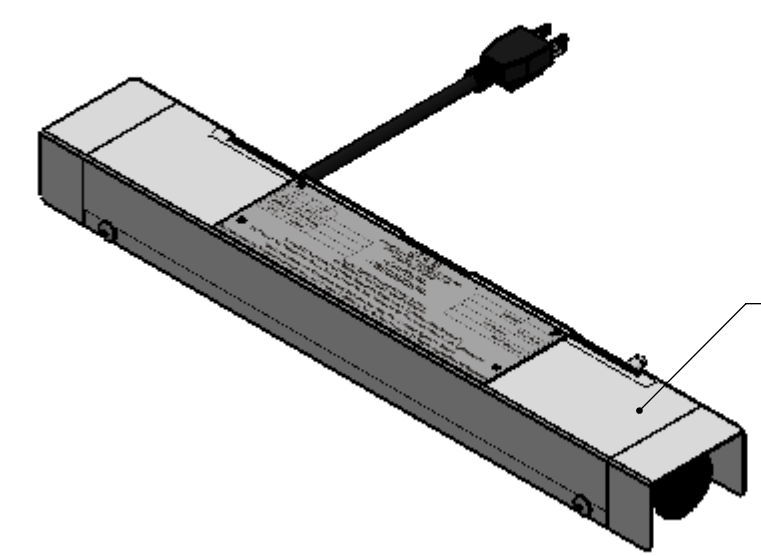
EV-100 (REGULATOR)  
STANDARD WITH EC-151 ONLY



DETAIL C  
SCALE 2 : 5



SECTION A-A  
SCALE 1 : 3.75



C66-100 (CONTROL BOX)  
STANDARD WITH EC-151 ONLY

- NOTES:
1. EC-151 SHOWN
  2. STANDARD 16 INCH LONG POST LENGTHS SHOWN, OTHER LENGTHS AVAILABLE UPON REQUEST
  3. C66-100 CONTROL BOX: 1.79 X 2.79 X 18.00
  4. CONTROL BOX CHORD IS 6.5 FT LONG
  5. ALL DIMENSION ARE IN INCHES UNLESS OTHERWISE SPECIFIED

STROKE LENGTH	DIM A
3	25.93
4	27.93
5	29.93
6	31.93

**Janesville Tool & Manufacturing Inc.**  
3930 Enterprise Drive  
Janesville, WI 53546  
Phone: 608-314-1620, Fax 608-314-1625

---

TITLE: **E-SERIES PRESS**

SIZE	DWG. NO.	REV
<b>C</b>	<b>EC-151/E-151</b>	<b>A</b>

SCALE: 1:8 | WEIGHT: 97.19 | SHEET 1 OF 1