

Cylinder Information

Model E-151	4-1/2" Bore x 3" Stroke—Double End (Repair Kit 4-1/2" Bore—Double End)	601 20352
Model EC-151	4-1/2" Bore x 3" Stroke—Double End (Repair Kit 4-1/2" Bore—Double End)	601 20352
Model E-235	4-1/2" Bore x 3" Stroke—Double End—2 Stage (Repair Kit 4-1/2" Bore—Double End—2Stage)	607 607-RK
Model EC-235	4-1/2" Bore x 3" Stroke—Double End—2 Stage (Repair Kit 4-1/2" Bore—Double End—2Stage)	607 607-RK



3930 Enterprise Drive
Janesville, Wisconsin 53546

Phone 608/314-1620
Fax 608/314-1625

www.janesvilletool.com
sales@janesvilletool.com

SERVICE MANUAL

SERIAL# _____



E - SERIES

E-151
EC-151
E-235
EC-235

3930 Enterprise Drive
Janesville, Wisconsin 53546

Phone 608/314-1620
Fax 608/314-1625

www.janesvilletool.com
sales@janesvilletool.com



Model EC-235 Shown

Safety Instructions

Read All Instructions Carefully

1. **DO NOT OPERATE PRESS WITH GUARDS REMOVED.**
ALL SAFETY DEVICES MUST BE INSTALLED AND OPERABLE.
2. **ADDITIONAL GUARDING IS REQUIRED FOR SPECIAL TOOLING.**
3. **DISCONNECT PRESS** when not in use, before servicing, and when changing accessories, such as down stops and tooling.
4. **WEAR SAFETY GLASSES WHILE OPERATING PRESS.**
5. **GUARD AGAINST ELECTRIC SHOCK.** Do not use in damp locations.
6. **DRESS PROPERLY.** Do not wear loose fitting clothing or jewelry that could get caught in moving parts.
7. **KEEP HANDS AWAY.** Never reach near moving parts.
8. **DO NOT OPERATE PRESS OVER 80 PSI.** Excess pressure may cause damage or injury.
9. **DO NOT OPERATE PRESS OVER LABELED VOLTAGE.**
10. **WATCH FOR DAMAGED PARTS.** If press is damaged during operation, examine the damaged part carefully to insure that it will operate properly. If in doubt, replace the damaged part. Check for alignment of moving parts, binding of moving parts, mounting and any other conditions that may affect its operation.

E-Series Parts List

Models E-151/EC-151 & E-235/EC-235

ITEM	REQ'D	NAME	PART NO.
1	1	Press Base	3000-74
2	1	Control Box Cover	2000-33
3	1	Control Box Base	2000-34
4	2	Column	2000-37
5	1	Top Guard	3000-72
6	1	Anti-Rotate Stud	3000-08
7	2	Push Button	503A
8	1	Power Cord	505
9	1	Air Filter/Regulator	512
10	2	1/4" NPT Muffler	513
11	1	Fuse	515/516
12	1	Control Module	540
13	1	Power Switch	560
14	1	2" Pipe Nipple	787
15	1	Top Guard Cap	785
16	1	Valve	792
17	1	Adjustable Down Stop	3000-70
18	1	Anti-Rotate Bushing	790



12. STAY ALERT. Watch what you are doing. Use common sense.

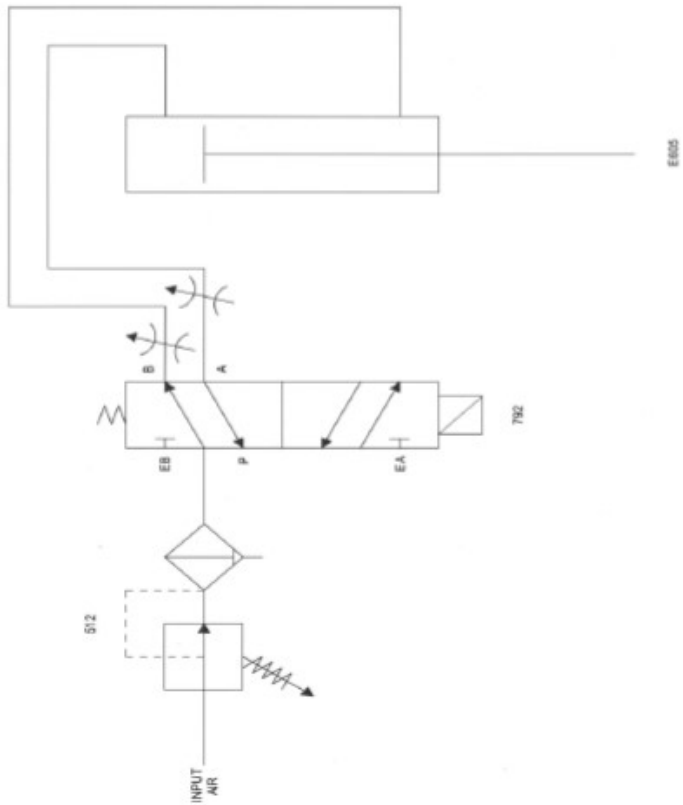
Thanks to its unique design, this press requires virtually no maintenance. Clean, dry air is required for operation.
(Lubricated air may be used, but must be used for the life of the press.)

To alter the ram descent speed on your JT&M Press, adjust the screw marked B Located on the left hand side of the cylinder. To alter the ram ascent speed, adjust screw A. (The ram retraction speed has been preset by the factory.) Rotate the screws clockwise to decrease the speed of the ram.

To operate press, push palm buttons in at the same time. Hold the palm buttons in until the down stroke is completed.

3

Pneumatic Schematic



Electrical Schematic

